

# ONWA<sup>®</sup>

## KR-1338C/KR-1668C

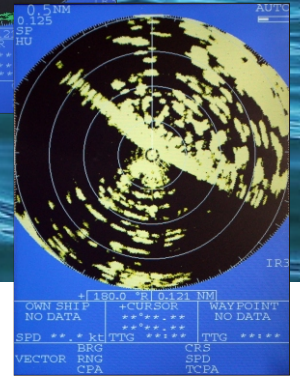
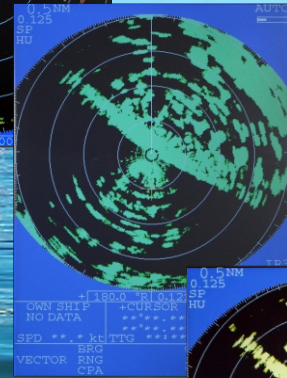
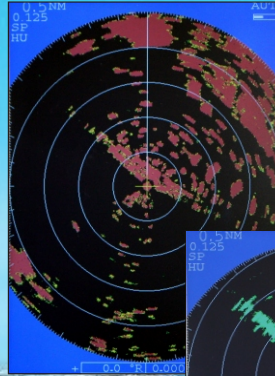


KR1338C

KR1668C -

10.4"

NMEA 0183 ,



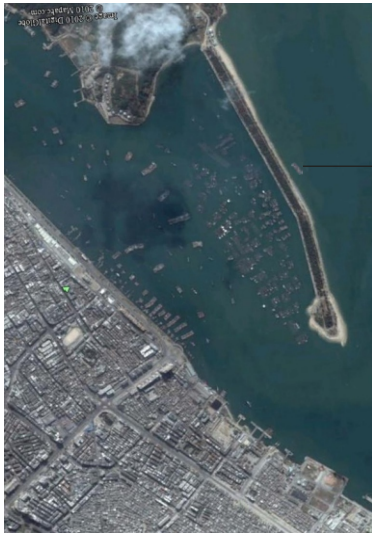
- 
- 
- 
- 
- 
- 
- 
- 
- 
- 
- 

3 NMEA

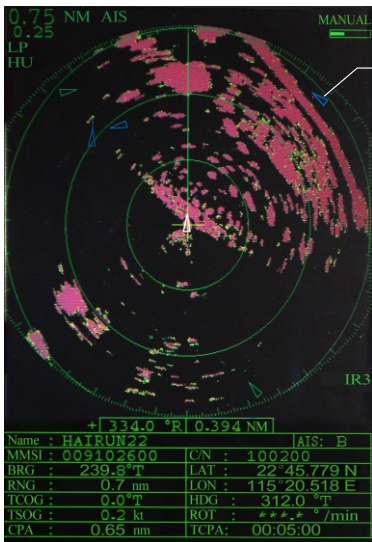
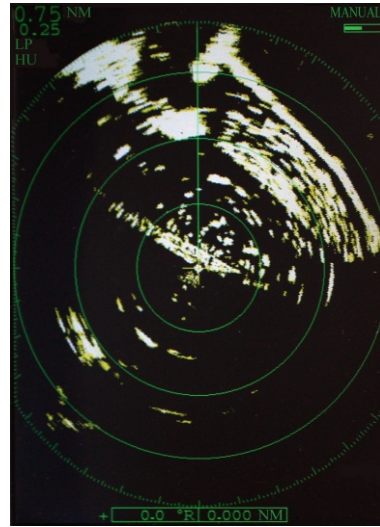
\*

# NMEA

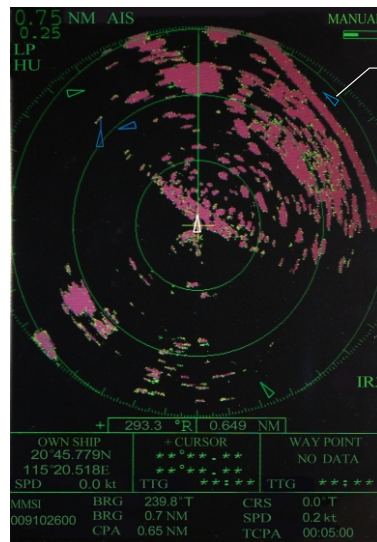
\*



AIS Vessel



AIS Vessel



AIS Vessel

ROT,

# KR-1338C/KR-1668C

1. :  
KR-1338C: 55  
KR-1668C: 120
2. :  
KR-1338C: - 60 (KRA-1002) 24 /  
KR-1668C: 120 (KRA-1003) 24 /
3. : 100
4. :  
KRA-1002: :4° :25°  
KRA-1003: :1.9° :22°

1. : 9410 30 ( X)
2.  
0.08 μs/2100 Hz(0.125, 0.25, 0.5, 0.75, 1, 1.5\* nm)  
0.3 μs/1200 Hz(1.5\*,2,3 nm)  
0.8 μs/600 Hz(3\*,4,6,8,12,16,24,36, 48\*\*, 64\*\* nm)  
*\*Pulse length & PRR for 1.5 and 3nm ranges can be select in menu*  
*\*\*KR-1668C*
3. : 4
4. :
5. : 60M  
Bandwidth:25 MHz (0.08/0.3 μs),3MHz (0.8 μs)
- 6., : 10dB

1. :  
10.4" - , 32- TFT  
640( ) × 480 ( )
2. :  
\* , - \*\* \* , \*
3. ( )  
: 0.125, 0.25, 0.5, 0.75, 1, 1.5, 2, 3, 4, 6, 8, 12, 16, 24, 36  
- : 0.0625, 0.125, 0.125, 0.25, 0.25, 0.5, 0.5, 1, 1, 2, 2, 3, 4, 6, 12
4. - :  
: 15s, 30s, 1min, 3min, 6min, 15min , 30min
5. (NMEA 0183 )

\$ -- APB, \$ --BWC, \$ --BWR, \$ --DBK, \$ --DBS, \$ --DBT, \$ --DPT, \$ --GGA,  
\$ --GLC, \$ --GLL, \$ --GTD, \$ --HDG, \$ --HDW, \$ --HDT, \$ --MDA,  
\$ --MTW, \$ --RMA, \$ --RMB, \$ --RMC, \$ --VTG, \$ --VHW, \$ --XTE

6. : ATON  
: , MMSI, / , L/L,  
/ , ROT, CPA/TCPA  
( )  
:  
-15°C +55°C ( )  
-26 +70 ( )

- 10.5VDC 40.0 VDC 60

1. (KRD-1003) 1
2. KR-1338C: KRA-1002 1  
KR-1668C: KRA-2002 1
3. (KRC-004-10/15/20),  
10/15/20/30m (Specify when ordering)
- 4.- (KRP-002-θ), 3
5. 1

